

Officially Supported by

LONDON CHAMBER  
COMMERCE AND INDUSTRY

CONNECT. INFLUENCE. SUPPORT.



# LONDON BUILD 2017 EXPO

Featuring 9 different Summits, including:



## DIGITAL CONSTRUCTION & BIM SUMMIT 2017

The largest event in the UK for digital construction professionals



## THE UK INFRASTRUCTURE & CIVIL ENGINEERING SUMMIT

Discover opportunities in the UK's recently announced massive infrastructure investment programme



OCTOBER 25<sup>TH</sup> & 26<sup>TH</sup>  
[www.londonbuildexpo.com](http://www.londonbuildexpo.com)

**300+**  
Exhibitors

**20,000+**  
Registered  
Attendees

**150+**  
Conference Sessions  
and CPD Accredited  
Workshops

**1000'S OF**  
Hosted-Buyers

**THE UK'S LARGEST CONSTRUCTION EVENT  
TO EXCLUSIVELY FOCUS ON LONDON  
NOW COVERING ALL OF THE UK!**

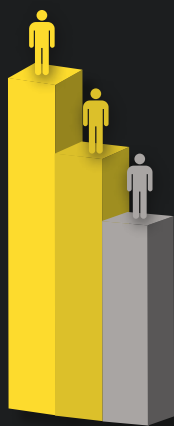
Sales Representative in Italy  
Corexpo Italia Srl: T: 0422 718019 - [info@corexpo.it](mailto:info@corexpo.it)







# LONDON BUILD'S REMARKABLE GROWTH



## REGISTERED ATTENDEE FIGURES

**2017** = 20,000 (Expected)

**2016** = 12,913

**2015** = 9,121



## 99 COUNTRIES REPRESENTED IN 2016

London Build 2017 is the UK's largest construction expo dedicated entirely to opportunities in London and the South of England. London Build is attended by thousands of 'movers & shakers' in the UK's construction industry from: contractors, developers, government, architects, solution providers and more.

London Build 2016 sold out of exhibition space 2 months prior to the event. We expect **LONDON BUILD 2017** to reach capacity well before the show, we do therefore recommend booking early.



# FEEDBACK FROM 2016

I think it's a very interesting mix across the construction industry of supplier, contractors and architects. What I particularly like is the mix of seminars and workshops, that liveliness and debate, I think the quality of the speakers and panel discussions has been really high.

ALISON LOW  
SECRETARY GENERAL,  
ASSOCIATION OF CONSULTANT ARCHITECTS



We came with an open mind hoping to get good enquiries from predominantly structural engineers, civil engineers and architects. We've had enquiries predominantly from the south of England but from as far away as Korea, Lithuania, Holland, and Poland, so it's also had a good international flavour for us as we are in an international group of companies selling our products right across the globe.

EDWARD ABBOTT  
GENERAL MANAGER, ACE FABREEKA



We've really enjoyed being here at London Build this year. It's been a very exciting show, lots for our members to come and see. We've had very good attendance on our stand. Out of our 46,000 members, lots have come to visit us here, and there has also been lots of other things for them to see, lots of very interesting products, very interesting services, lots of new ideas for them to see at the show today. Even more important than that, lots of interesting CPD for them to take the benefit of, so we've really enjoyed it and I think our members have too.

JACQUELINE BALIAN  
COMMERCIAL DIRECTOR, CIOB



London Build is a great opportunity to get face time with experts in their field and make contact with the key personnel that you want to meet. In an industry that is continually digitised, a forum for handshakes and conversation is much appreciated.

NEIL SCROXTON  
MANAGING DIRECTOR, W



From a promotional point of view and a business point of view it's been fantastic. We've networked, we've sold, we've had great interest, we've got good leads, it's just rolled on and rolled on, it's been so valuable. We've met some great people, we've formed partnerships and collaborations, so the network that we work with has grown, so I take away not only business but a bit of friendship too.

ANDY DEAN  
MANAGING DIRECTOR, BS2B



## WHAT WAS SAID ON TWITTER?



Glass Canvas @GlassCanvas · Oct 28

Amazing! People were queuing up to try our #VR & 360 content @LondonBuild2016. Follow the link to see more photos - [facebook.com/GlassCanvasCGL...](https://facebook.com/GlassCanvasCGL...)



Commission Air @commission\_air · Oct 28

We had a fantastic time exhibiting @LondonBuild2016 and it was great to meet everyone! #London #LondonBuild #FridayFeeling #CanaryWharf



LABC @labcuk · Oct 28

....and a very Happy #FollowFriday to @LondonBuild2016 - was a great event we're looking forward to next year! :)



Lourdes G. Cerezuela @ArchiGingerTect · Oct 27

Great VIP Luncheon networking with a lot of business card exchange @LondonBuild2016 Expo! #LondonBuild #TeamMH

Malcolm Hollis LLP, London Build, Olympia London and Lourdes G. Cerezuela



Safe Contractor @safe\_contractor · Oct 28

Great couple of days at @LondonBuild2016 - see you all next year! #LondonBuild #Expo



Calco Services @CalcoServices · Oct 28

We have had such a great time at #LondonBuild @LondonBuild2016 #Daviv! Looking forward for the next one!

London Build for us has been absolutely fantastic, we can't thank the London Build team enough for inviting us to be the charity representative of the show. We've had an absolutely fabulous time, had some fantastic conversations, some people are going to do "Lighthouse Day's" for us to raise money for the charity and last night at the London Construction Awards was immense! Great fun and what's more we raise about £3,000 out of the crowd. Can't thank the London Build team enough! Immense!

BILL HILL  
CHAIRMAN, LIGHTHOUSE  
CONSTRUCTION INDUSTRY CHARITY





# SO WHAT IS LONDON BUILD ALL ABOUT?

London Build has shown significant growth since its launch year, and we make no secret of our ambition to continue to grow London Build in to one of the world's leading, most innovative and respected construction events.

London Build believes that there are **3 key elements** that must be provided to in order to deliver a top-quality event that provides significant value to its exhibitors and attendees.

These 3 key elements are: **content, networking** and **entertainment**.

## CONTENT

One of the key aims of London Build is to draw high-quality attendees to the event by providing world-class content in the form of high-level and free conference speakers and workshop facilitators. London Build features 9 different Summits that host over 150 CPD-accredited speakers from the very top of London and the UK's construction industry.

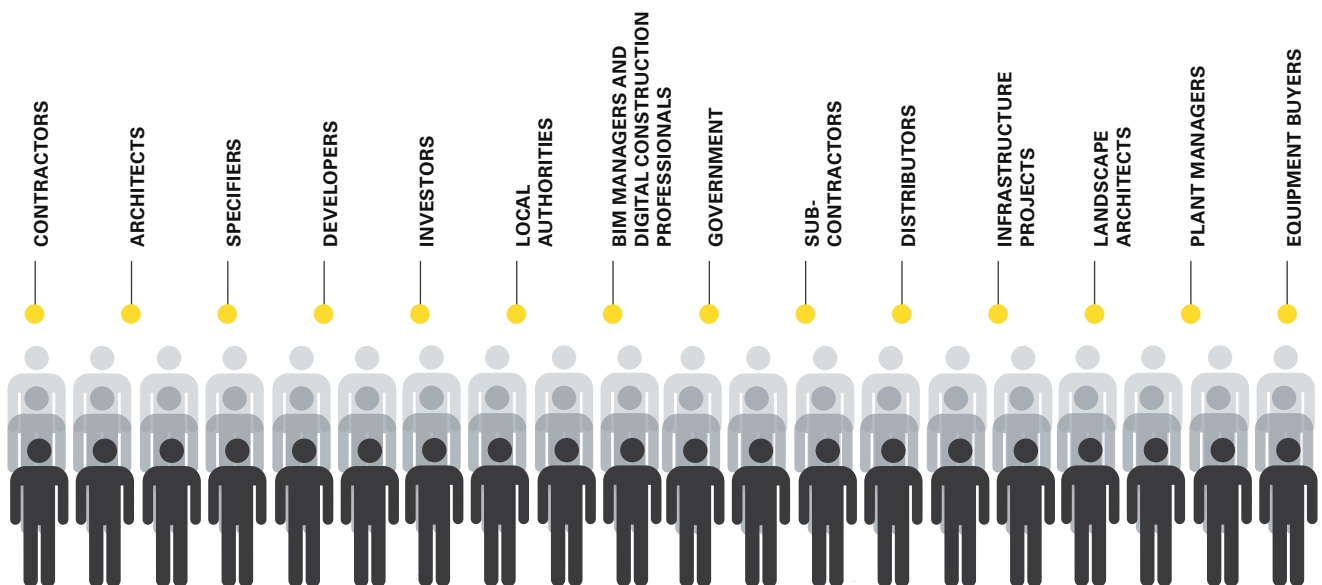
## NETWORKING

Providing networking opportunities for exhibitors is a number one priority for London Build. Any company that regularly exhibits at events might at sometime have experienced the frustrating feeling of standing by their stand with nobody to talk to. Our aim at London Build is to ensure there are no dry periods where you are not meeting new clients; it is our role as event organisers to constantly look for new and innovative techniques of introducing all our exhibitors to their target audience. Shortly after booking on to exhibiting at London Build you will be assigned an Account Manager who has the job of pinpointing the exact type of companies and job titles you would like to meet. Using our Business Matchmaking Service we then contact these types of companies on your behalf with the aim of bringing them to the event and introducing them to you. Furthermore, throughout the event we will create a series of 'introductions' and meetings for you with a wide range of buyers. Additionally, our Meet the Buyer Service and VIP Luncheon provide networking opportunities in the form of speed networking, group meetings, and one-to-one meetings.

## ENTERTAINMENT

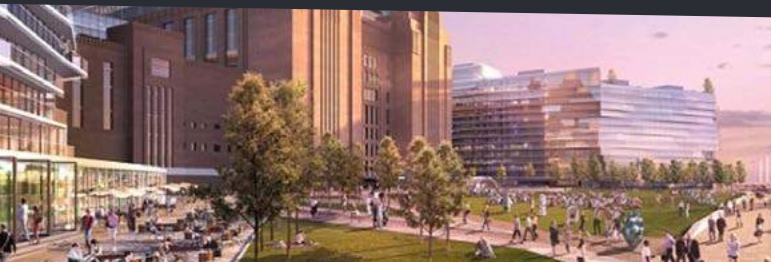
Our view is that London Build must first-and-foremost be a fun event. As event organisers we have the important task of attracting high level attendees to the event to meet our exhibitors. We find that providing content is the best technique of attracting high-level attendees to the event; but creating a fun and entertaining environment for attendees is what keeps people at the event all day. From the moment attendees arrive at London Build in the morning until the moment they go home in the evening we want to keep everyone entertained, happy and in a relaxed enough mood to network and do business. Examples of the wide-ranging entertainment we have included at London Build include: live music; street performers; a Mr Bean lookalike welcoming guests on arrival; the construction industries first-ever Oktoberfest beer festival with live German entertainment, plus much more!

## MEET AND BE INTRODUCED TO 1000'S OF BUYERS



# MAJOR INFRASTRUCTURE & CONSTRUCTION PROJECTS IN LONDON

London boasts a large and diverse pipeline of construction projects over the coming years. London Build covers all the major infrastructure & construction projects taking place in London and the South of England and provides the opportunity to meet, network and do business with all the key players behind them.



## BATTERSEA POWER STATION

Battersea Power Station was built in the 1930s and is a famous landmark on the south side of the Thames. A stunning £9 billion development project will create 800+ apartments, offices, shops and a new Northern Line tube station. Discover more about the Battersea Power Station development at London Build



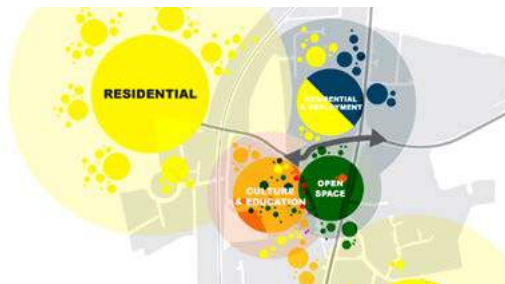
## HEATHROW AIRPORT EXPANSION

After years of debate as to which airport out of Heathrow or Gatwick would be expanded with a new runway, in late-2016 the UK government gave the green light to Heathrow. Under the airport's proposed scheme, an additional runway and a sixth terminal will be built to the north-west of the existing airport perimeter at a cost of £17.6 billion. Network with Heathrow Airport and UK government representatives at London Build.



## CROSSRAIL 2

Whilst Crossrail opens in 2018-19, Crossrail 2 is a proposed new rail route in the South of England that would run from Surrey to Hertfordshire on a new rail network across London. Every year London Build is attended by representatives from Crossrail as well as all representatives from all the major infrastructure projects in London and the UK.



## REGENERATION PROJECTS

(TOTTENHAM, CROYDON, SHOREDITCH, SOUTHAALL AND MORE)

The Strategic Regeneration Framework is a landmark 20 year vision for the future of Tottenham. The regeneration programme for Tottenham includes new housing, improving of existing homes, better transport links, and infrastructure. Likewise, across the rest of London and the South of England multiple large-scale regeneration and housing development projects are set to take place including in Croydon, Paddington Quarter, Southall, Earls Court, Newham, Greenwich and many more. London Build provides the ideal opportunity to meet with all the key players in government and industry involved in all regeneration projects across London and the South of England



## HS2

HS2 is a £56 billion new high-speed rail link between London and Manchester. This highly ambitious project is forecast for completion between 2026 and 2033. London Build provides the opportunity to meet and network with the key players behind all the major infrastructure projects in the UK.



## HOUSE BUILDING

As the government aims to reach its target of 1 million new homes in the UK by 2020, a raft of house-building projects are taking place across the length and breadth of London and the South. London Build is attended by thousands of delegates from contractors, architects, local government, developers; to discuss all the major house building projects in and around London.



## LONDON'S SKYSCRAPER BOOM

London's skyscraper boom continues with over 115 new towers in the pipeline. As London continues to grow upwards, the future of London's skyline is set for remarkable change in the coming years. London Build provides in-depth analysis of all the major tall building construction projects in and around London, with the opportunity for meetings with the key players behind them



## STRATFORD'S INTERNATIONAL QUARTER AND COMMERCIAL CONSTRUCTION PROJECTS IN LONDON

London Build provides in-depth insight into all the major commercial construction projects across London and the opportunity to network with the developers, investors, architects and contractors behind them.



# EXHIBITION **FEATURES**

LONDON CHAMBER  
COMMERCE AND INDUSTRY  
CONNECT. INFLUENCE. SUPPORT.

**LONDON CHAMBER  
OF COMMERCE  
BREAKFAST**



**SKILLS HUB**

**CIOB**  
THE CHARTERED INSTITUTE OF BUILDING

**WORKSHOPS**



**LCA**

**LONDON  
CONSTRUCTION AWARDS**  
FT. JIMMY CARR  
COMEDY EVENING

**[LIVE  
DEMO]**

THE WOMEN IN CONSTRUCTION  
**Morning  
Tea**

**VIP LUNCHEON**  
FEATURING **Meet THE BUYER**



**CPD  
WORKSHOPS**



**COMPETITION  
& PRIZE  
DRAWS**



THE  
**ARCHITECTS  
HUB**

**OKTOBERFEST**  
BEER FESTIVAL



**150+  
CONFERENCE  
SESSIONS**



**INFRASTRUCTURE  
SUMMIT**

**MACHINERY &  
EQUIPMENT  
ZONE**

**BUILDING &  
CONSTRUCTION  
ZONE**

**5  
SPECIALISED  
SUMMITS**



**DIGITAL CONSTRUCTION  
& BIM SUMMIT 2017**

The largest event in the UK for digital construction professionals



**SUSTAINABILITY  
SUMMIT**



**THE  
HEALTH & SAFETY  
SUMMIT**

**THE LONDON  
HOUSING SUMMIT**



**THE UK  
INFRASTRUCTURE &  
CIVIL ENGINEERING SUMMIT**

# Meet <sup>THE</sup> BUYERS



**DURING LONDON BUILD 2017, WE WILL BE HOSTING EXCLUSIVE - MEET THE BUYER SESSIONS ON BOTH DAYS OF THE SHOW. THESE NETWORKING SESSIONS WILL PROVIDE THE PERFECT PLATFORM TO MEET AND NETWORK WITH HUNDREDS OF KEY DECISION MAKERS AND EXPERT INDUSTRY INSIDERS** (Featuring One-to-One Meeting, Group Meetings, Speed Networking and a VIP Networking Lunch)

**BELOW IS A SMALL SAMPLE LIST OF OUR 2016 VIP BUYERS** (FULL LIST AVAILABLE ON REQUEST):

## Meet <sup>THE</sup> CONTRACTORS

## Meet <sup>THE</sup> ARCHITECTS & SPECIFIERS

## Meet <sup>THE</sup> DEVELOPERS

## Meet <sup>THE</sup> COUNCILS & GOVERNMENT

## Meet <sup>THE</sup> HOUSE BUILDERS

## Meet <sup>THE</sup> DISTRIBUTORS & AGENTS

3d Architects | A&A | AA2 Architecture Ltd | Adam Renovations Ltd | AECOM | Antler Homes | ASB Architects | Ashville Inc | Association of Consultant Architects | Aukett Swanke | Aukett Swanke Architects | Avanti Architects | Azar Building | Balfour Beatty | Barclay St James Construction | BCL | Beard | Bellway Homes | Berkeley Homes | Berkeley Homes (North East London) Ltd | BIM Strategy Ltd | Bourne Construction Engineering Ltd | Bouygues UK | Bovis Homes | Brent Housing Partnership | Burrell Mistry Architects | Bushby contracts Ltd | BWCP Architects | C C Construction | Canary Wharf Contractors | Catalyst Housing Group | ChojnowskiDesign | City of London | City of London Corporation | Costain | Dallas Pierce Quintero | DarntonB3 Architects | Dawnus Construction | Day Architectural | DB Associates | De Rosee Sa | Debbie Flevotomou Architects | Design Haus Liberty Ltd | DLG Architects | Dorseys Construction Materials | Ealing Council | Edward Sunderland Ltd | EPR Architects | Erbar Mattes | Fabrizio Lepore Architects | Fairview Homes | Ferrovia Agroman | Foster and Partners | Foster Wilson Architects | Frencon | Fresh Design International | Genesis Housing Association | Graham Ford Architects | Granit Chartered Architects | Granit Chartered Architects Ltd | Granit Chrted Architects | Hamiltons Architects | HAP | Harrington builders kenley Ltd | Heatherwick Studio | Heathrow Airport Ltd | Hexagon Housing Association | HKS Architects | Holmes Miller | IA Interior Architects | ICE | IID Architects | Interserve Construction | Interserve Construction Ltd | IslingtonCouncil | J Coffey Construction | J Reddington Ltd | James Taylor Construction | Jarvis Contracting Ltd | JCB | JDA Architects | Jenkins&Potter | Jerram Faulkus Construction | Jewson | John Fleming Architects | John McCall Architects | Jonathan Louth Architects | K. MASTERS | Kier | Kilnbridge | KSR Architect | Laing O'Rourke | Lakesmere Ltd | Lancaster Toyota Colchester | Laxcon Construction | LCCI | Lendlease | Lendlease Development (Europe) Ltd | Lewisham Homes Ltd | Linea Homes | London Borough of Croydon | London Borough of Hillingdon | London Borough of Ealing | London borough of Hounslow council | London Borough of Lewisham | London Borough of Newham | London Chamber of Commerce and Industry | London City Airport | Mace | Mackay and Partners | Malcolm Hollis | Marianne and Robb Oliver Architects | Mark Jordan Architecture and Design | Matchbox Architects | MBA Architects | MBH Architects Ltd | MC Architecture | MCL Architecture | MDR Associates | Morgan Sindall | Mulalley & Co Ltd | Multiplex Global | Munrostudios CGI | Natasha Reid Design | National Centre for Diversity | Network Homes | Nike Construction Ltd | Northampton General Hospital | Notting Hill Housing | NSBS Ltd | O&D PROJECTS LTD | Office sian architecture + design | Officetwentyfive Architecture | OKO Group | One Housing Group | Olswang LLP | Open City | Owen Architects | Oxfordshire County Council | Peabody | Perkins and Will | Phoenix Community Housing | PineCone Log Homes | Pinington Ltd | Place-Make | Platinum Projects Europe Ltd | Portsmouth City Council | PR Architects | Project Scotland | PTAL (TFL) | Purcell | Qatari Diar | Quintain | Quintain Ltd | RDG Engineering | Reardonsmith Architects | Red Door Ventures | Redrow Homes London | Regents Estate (London) LLP | Regents Estates (London) LLP | Remax Key Properties | Rise | Rogers Stirk Harbour + Partners | Royal Borough of Kensington and Chelsea | Royal Engineers | Sackville Construction Ltd | Sainsburys Supermarkets Ltd | sant gobain pam | Sat ISOL France | Scenario Architecture | SD Structures LLP | Shade Abdul Architecture | Simone de Gale Architects | Sir Robert McAlpine | Sir Robert McAlpine Ltd | Sizebreed Construction | Skanska | Smart City | Southern Housing Group | Spaceagency Design | Spark | St George West London | Stantec | Stephen Crawford Architects | Studio Basheva | Studio Wolter Navarro | STV Construction Group | SURE Architecture | Swan Housing Association | TFL | T Space Construction Ltd | Thames Water | The Manser Practice | Tideway | Tower Hamlets Council | Tower Hamlets Homes | Turner & Townsend | Uretek UK | Vectos | VINCI Construction | Vorbild Architecture Limited | Waltham Forest Council | Wandsworth Council | Wates Group | Westfield Europe | Whitbread /Premier Inn | Willmott Dixon Interiors | Woodbar Ltd | Zaha Hadid Architects

## FEATURING





# THE UK INFRASTRUCTURE & CIVIL ENGINEERING SUMMIT

OCTOBER 25<sup>TH</sup> & 26<sup>TH</sup>



## The Largest Infrastructure Event in the UK!

The pipeline of infrastructure projects in the UK currently stands at over £500 billion. This is the largest amount of infrastructure investment at any point in UK history. Meet and do business with all the key players behind UK infrastructure projects.

### FEATURING:

- ✓ A large Exhibition showcasing all the leading infrastructure projects and innovative solutions
- ✓ A multi-streamed and CPD accredited Conference providing hundreds of hours of insight, presentations and case studies into UK Infrastructure
- ✓ Meet the Buyer sessions providing one-to-one meetings and networking opportunities with a huge range of infrastructure project developers, contractors and architects

### WHO YOU WILL MEET

- ✓ The Infrastructure Summit is attended by thousands of high-level attendees from:
- ✓ Major infrastructure projects
- ✓ Contractors
- ✓ Local & Central Government
- ✓ Civil Engineers
- ✓ Architects

### PAST ATTENDEES INCLUDE



### JOIN US FOR THE UK INFRASTRUCTURE NETWORKING PARTY

On the evening of Day One of London Build will be a UK Infrastructure Networking Party. Join us for a night to remember with fine food & drink, celebrity entertainment and plenty of high-level networking!







# DIGITAL CONSTRUCTION & BIM SUMMIT 2017



OCTOBER 25<sup>TH</sup> & 26<sup>TH</sup>

The largest event in the UK for digital construction professionals

## FEATURING:

- ✓ Conference: a wide range of expert speakers
- ✓ Training Workshops
- ✓ An Exhibition
- ✓ A free Digital Construction Networking Party and Entertainment Evening
- ✓ Group networking sessions and one-to-one meetings
- ✓ Extensive entertainment
- ✓ Competitions, prize giveaways and fun



# SUSTAINABILITY SUMMIT 2017



OCTOBER 25<sup>TH</sup> & 26<sup>TH</sup>

The largest event in the UK for green construction professionals

## FEATURING:

- ✓ Conference: a wide range of expert speakers
- ✓ Training Workshops
- ✓ An Exhibition
- ✓ A free Sustainability Construction Networking Party and Entertainment Evening
- ✓ Group networking sessions and one-to-one meetings
- ✓ Extensive entertainment
- ✓ Competitions, prize giveaways and fun





## PLANT MACHINERY + EQUIPMENT ZONE



1st Line Defence
AllBuild Products
avantgarde
Bachy Soletanche
Beaver 84
Bennett Gynn Modelmaking Ltd
Blastrac UK
BloknMesh
City Lifting Ltd
Commission Air - Aerial and Time Lapse Photographers
Construct UK
Containex
CPD Standards Office
Cubis Industries
Davilav
Dynasafe BACTEC limited
Emerson Crane Hire Ltd
Envision Intelligent Solutions
EPMS Supplies
Evinox Energy LTD
Fieldwire
Glam Security LTD
Goose Foot Street Furniture
H.E Services
Hall Fuels
JA RATTIGAN & SON PLANT & V
ACUUM EXCAVATION HIRE
Mercedes-Benz
Modern Heavy Industries
Nationwide Traffic Solutions LTD
Octink
OnSite Support Ltd
Polyco
Prolectric (Solar Powered Lighting Towers)
QBE
Site-Eye
Speedy Services
Stormboard / Corksol
The Lighthouse Construction Industry Charity
TSI Instruments LTD
Vivax-Metrotech Ltd
VPS Site Security



## INTERIORS ZONE



Arredo3
Central London Lofts Ltd
Decoustics Saint-Gobain
Dekor Rulo Firca San. Ve Tic. Ltd. Sti.
Dextra Group plc
Eclipse Digital Media
HARLEQUIN Office Furniture Ltd
Heat Mat Limited
Heckmondwike FB
Optimum
Profab Access Ltd
Selectaglaze Secondary Glazing
Systemline
UK Fire Doors Ltd
Willmott Dixon Interiors
Zennio



## THE SKILLS HUB



BS2B
Construction Youth Trust
Go Construct/CITB
Hays
London Building Control
London South Bank University
Masters in Building Training
National Centre for Diversity
Olive Learning
One Way



## BUILDING ZONE



Addex Group
Adpol Trade
Advanced Thermal Build Solutions Ltd
Alcumus SafeContractor
Amalga LTD
Apollo Fire Detectors ltd
Aproplan
Aquapol UK
ARC Document Solutions
Astrotech Steels Pvt Ltd
Balfour Beatty
Bauder Limited
Bluebeam Software - Design Software Solutions
Border Archaeology
Bouygues UK
Catnic
CHAS UK
Chicks with Bricks
Club Wembley
DAD UK
Dudley Industries Ltd
Embassy of Poland, Trade & Investment Promotion Section
FixFirm
Flowcrete
Fosroc
Franki Foundations UK
G4S Secure Solutions
Galopin Playgrounds
Greenmill Ltd
Guildmore Ltd
Hometech-UK LTD
HP Inc UK Limited
IBB Polish Building Wholesale
ICB (Waterproofing) Ltd
ima3D
IMARF GRANITE
JDP Ltd.
Jobandtalent UK Ltd
Koronea Ltd.
Leica Geosystems
London Chamber of Commerce
Mailbox Mania
Mannvit
Martecfire
National Federation of Builders
Natural Cement
NINGBO OULIN KITCHEN UTENSILS CO. LTD
Orthograph
PlanGrid
Proludic
Resapol
Russell Play
Rentavent
Safesite Facilities LTD
SiteDiary by Script&Go
SJG Temporary Works Ltd
SolarEye 80
Stanley Black & Decker
Stormguard Rainwater Systems
The Childrens Playground
TOPSEAL
TSR-Lighting
Umetel Engineering Ltd
VK Architects & Engineers
Wicksteed Playgrounds
ZHEJIANG E LEADER INDUSTRIAL CO. LTD
ZipWall GmbH



## ARCHITECTS ZONE



Association of Consultant Architects (ACA)
Glass Canvas
Stanford Marsh
terrarossa project



## INFRASTRUCTURE ZONE



Bruel & Kjaer UK Ltd
Crossrail
EUROBEND GmbH
Heathrow
High Speed Two (HS2 LTD)
Kilnbridge
Land Science
MOLA
Off Grid Energy Ltd
Osprey Heavy Lift Ltd
Oxford Hydrotechnics
Pro-Lifting UK
Q2W Limited
Rec LTD
SCOTTISH AND SOUTHERN ELECTRICITY NETWORKS.
THSP Risk Managment
Tideway
Transport for London
Ultracrete



## SUSTAINABILITY ZONE



ACE Fabreeka UK
British Gas
Carbon Trust
Carillion
IEMA
Japanese Knotweed Ltd
Rointe
Showersave
SINTRA/PORTUGAL GLOBAL INVEST
Sound Space Solutions
Supply Chain Sustainability School
trentENERGY



## MATERIALS ZONE



Acrypol Products
Akfix
Chartered Institute of Building (CIOB)
Chene De Lux
Drainfast Ltd
Dura Composites
Emco
Grupo Puma
Henley Stone Specialists Ltd
La Escandella
Plastex
PTG Treatments
Step on Safety Limited
T.I Tiles International LTD
Virtus Contracts
Vistal Gdynia
WUXI EVO NEW ENERGY TECH. CO., LTD.

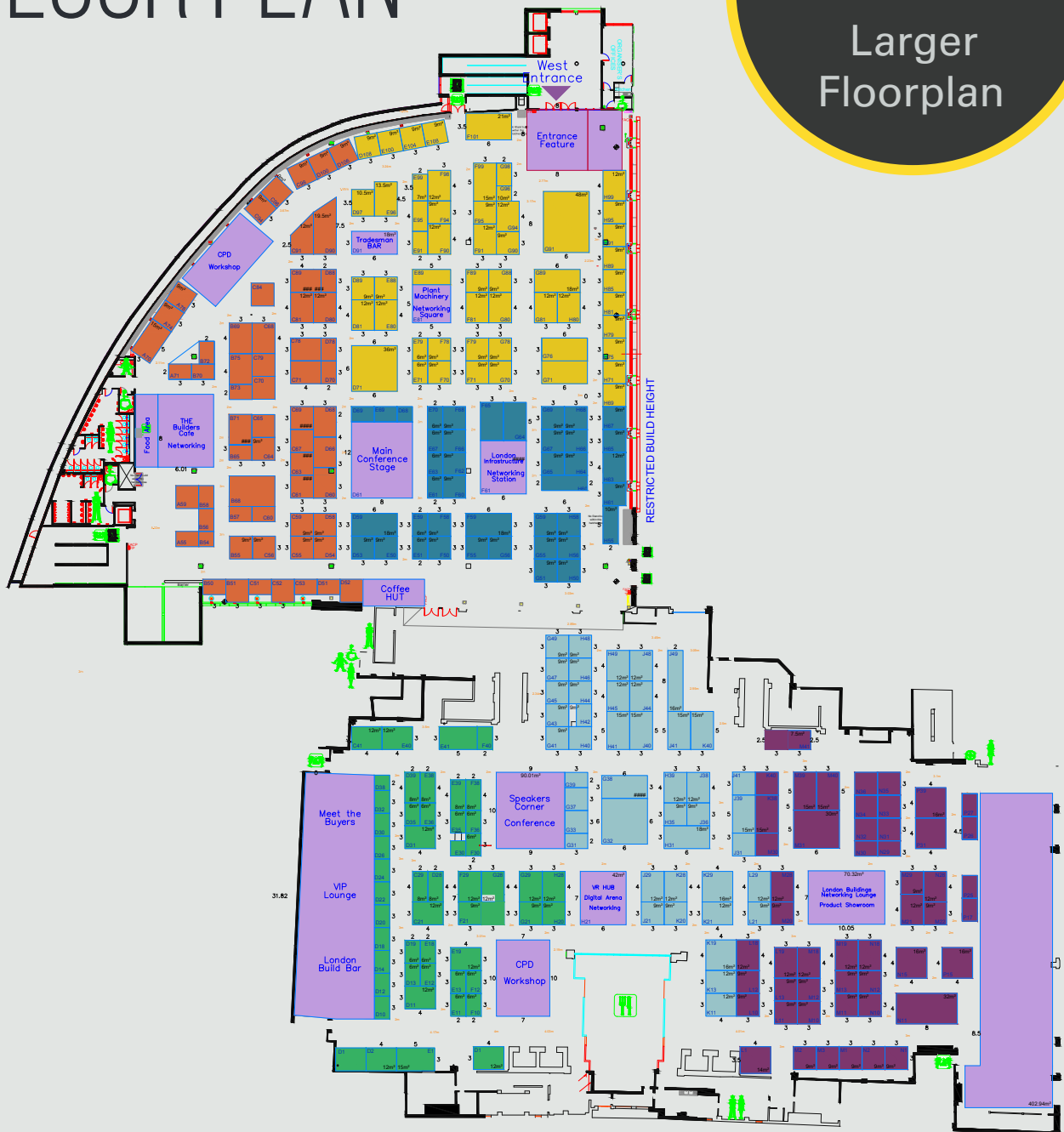


Bosch
Britool
Dewalt
Draper Tools Ltd
Facom
Hitachi Power Tools
Laserliner
Leica
London Power Tools & Fixings
Makita
Nightsearcher
Panasonic
Stanley Black & Decker
Trade Survey



# OFFICIAL FLOOR PLAN

**50%**  
Larger  
Floorplan



Plant Machinery  
+ Equipment  
Zone



Sustainability  
Zone



Digital  
Construction  
& BIM Zone



Infrastructure  
Zone



Building  
Zone



London  
Buildings



[www.londonbuildexpo.com](http://www.londonbuildexpo.com)

# SUPPORTED BY

## OFFICIALLY SUPPORTED BY



## LEAD EVENT PARTNER



## EVENT PARTNERS



## EXHIBITION FEATURES



Plant Machinery & Equipment Zone

Sponsored By



Building Zone

Sponsored By



Interiors Zone

Sponsored By



Materials Zone

Sponsored By



Infrastructure Zone

Sponsored By



Sustainability Hub

Sponsored By



Architects Hub

Sponsored By



Meet <sup>THE</sup> BUYERS  
VIP SESSIONS



SKILLS HUB



MARKET INTELLIGENCE HUB

## MEDIA PARTNERS



Architects Choice



CONSTRUCTION national

Construct UK  
CONSTRUCTION'S SALES & MARKETING HUB



Bringing Energy Together  
Combined Heat & Power  
District Heating & Cooling  
Demand Side Services



REFURB & DEVELOPER UPDATE





# CONFERENCE & WORKSHOPS

LONDON BUILD 2017 WILL FEATURE 150+ CONFERENCE SPEAKERS & TRAINING WORKSHOPS. THE SPEAKER LIST WILL BE ANNOUNCED SHORTLY.

## 2016 SPEAKERS INCLUDED



**Colin Stanbridge**

Chief Executive, London Chamber of Commerce and Industry (LCCI)



**Phil Wade**

Construction Director, First Base



**Geoff Pearce**

Executive Director of Development and Regeneration, Swan Housing Group



**Myles Taylor**

Director, Squire and Partners

SQUIRE & PARTNERS



**Phil Wilbraham**

Development Director, Heathrow Airport



**Aleksandra Njagulj**

Head of Sustainability and Innovation, Bouygues UK



**Jonathan Kendall**

Partner and Director of Urban Design, Fletcher Priest Architects

fletcher priest architects  
london + köln + riga



**Malcolm Levi**

Vice Chair, Peabody



**Elvin Box**

Performance Management Consultant, Mace Group



**Scott Young**

Skills and Employment Manager, Thames Tideway Tunnel



**Andrew Mellor**

Partner, PRP Architects



**Ann Gavaghan**

Design and Communities Manager, Transport for London - London Underground

## 2016 WORKSHOPS INCLUDED



soundspace.solutions

HONOUR



oliver kinross

Our portfolio of international build events in the world's **leading construction markets.**

# INTERNATIONAL BUILD SERIES



Sales Representative in Italy

Corexpo Italia Srl: T: 0422 718019 - [info@corexpo.it](mailto:info@corexpo.it)